

## 2400 TACHOGRAPH

### Veeder-Root Series 2400 Chart Recording Tachograph

#### **Easy to Use:**

The automatic unit is simple to fit and use, and is supplied with a clear and comprehensive manual.

#### **Easy to Install:**

Integral fitting or suitable mounting above or below the dashboard with minimum alterations.

#### **Standard Charts:**

Industry standard 125, 140 and 180km/h charts available.

#### **Convenient & Stylish Design:**

Being ISO Radio size, the Series 2400 mounts underneath the dash or can be put into any standard radio, cassette tape or single CD player mounting area. The unit also has a mechanical drawer for quick and easy mounting of charts, LCD front panel display and electronic control buttons. The 2400 is also tamper-proof.

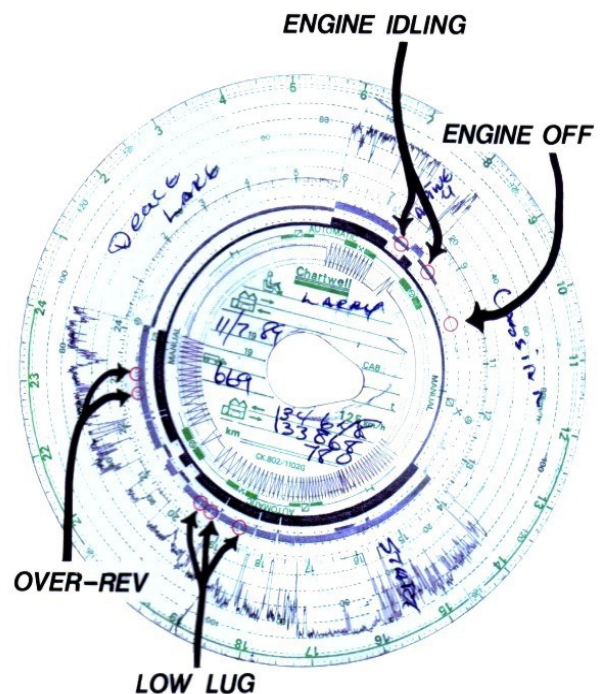
The series 2400 tachograph has all the features of a regular tachograph but in a more convenient, compact and easy to use form.

There are also a variety of accessories that maximize performance and convenience.

#### **Saves You Fuel, Easy Read Charts:**

Here is an example of how the 2400 Tachographs can save you fuel and see how easy it is read our charts.

Use the 2400 Tachograph or the TACH-MAN 9400 4th stylus tachograph to record engine revs on the front face of the standard drivers charts and tell at a glance if driving style can be improved to save fuel and reduce engine wear and tear.



©2013 Canadian Automotive Instruments Ltd.

Ph: 780-963-8930 Toll Free: 1-800-866-6016 Fax: 780-963-8230 Email: sales@c-a-i.net